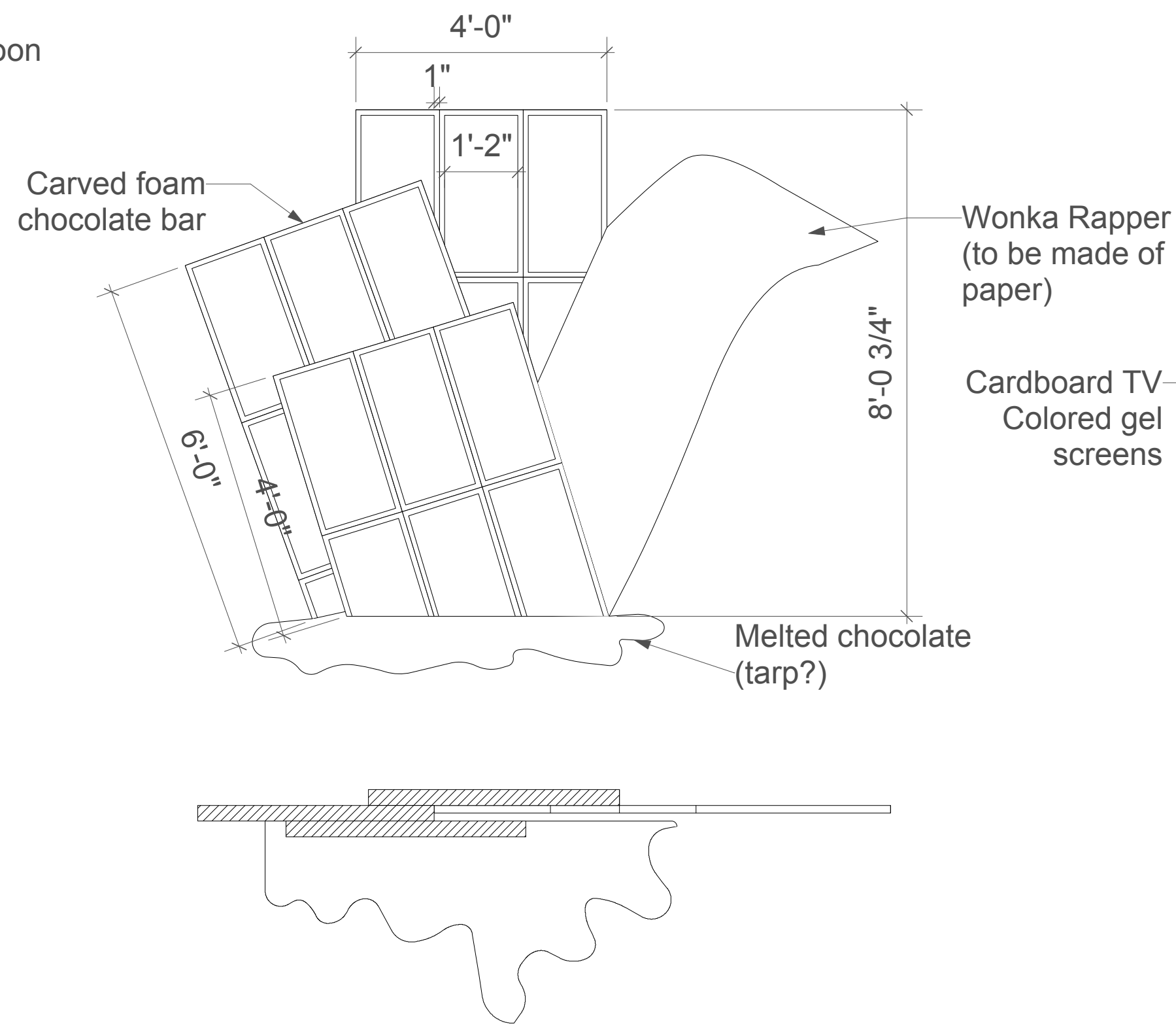
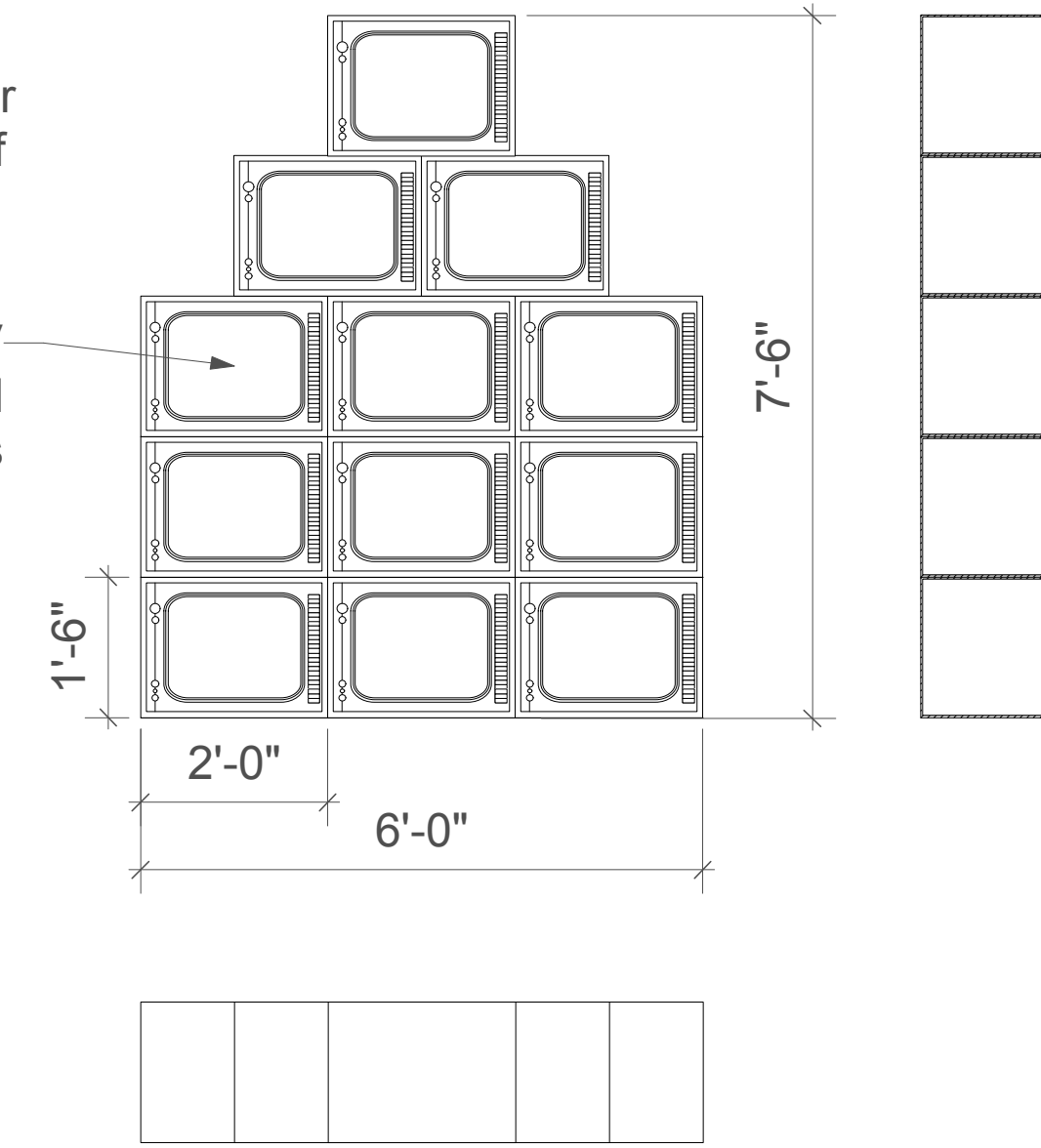


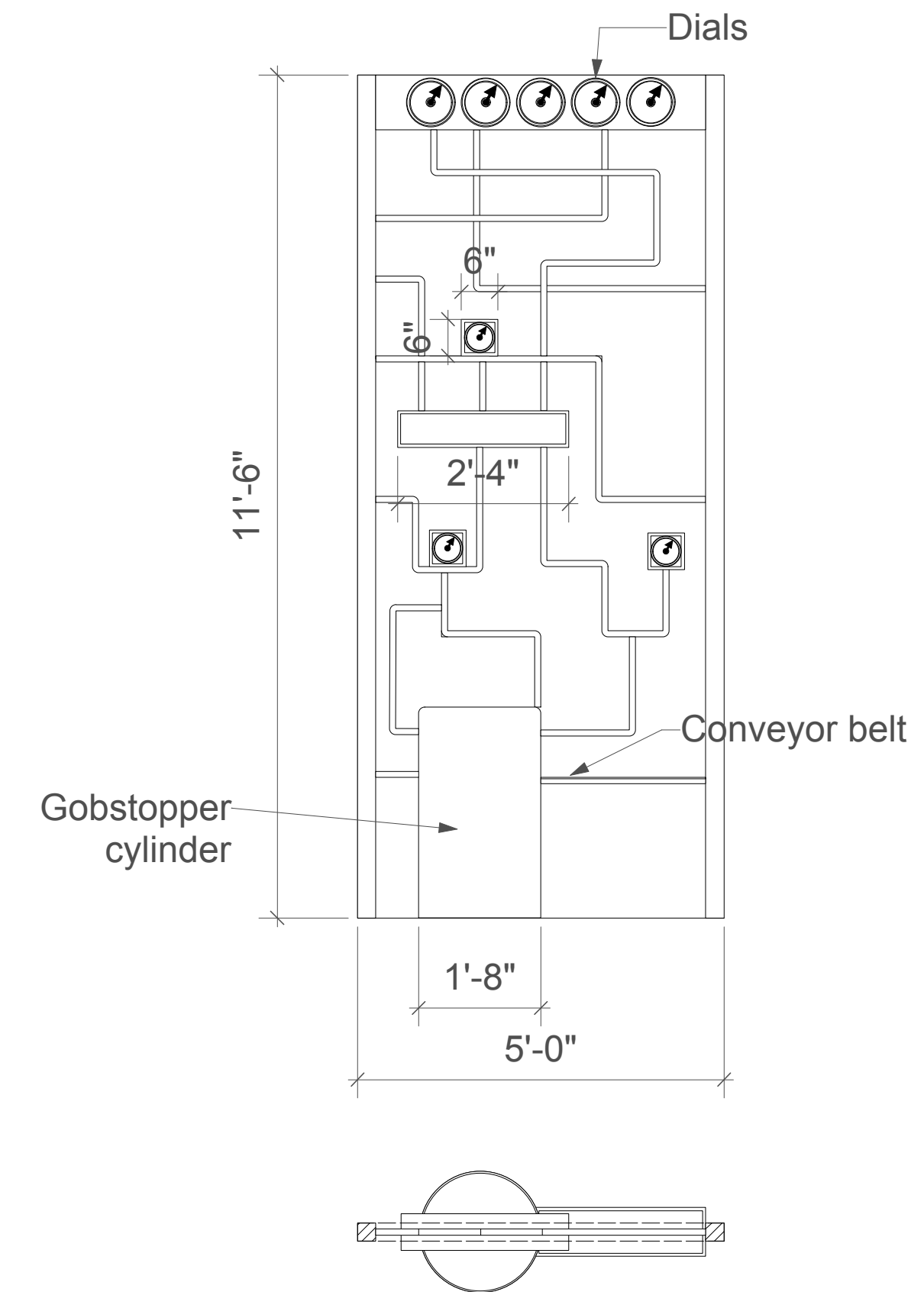
Fizzy Lifting Room  
GP and Elevation



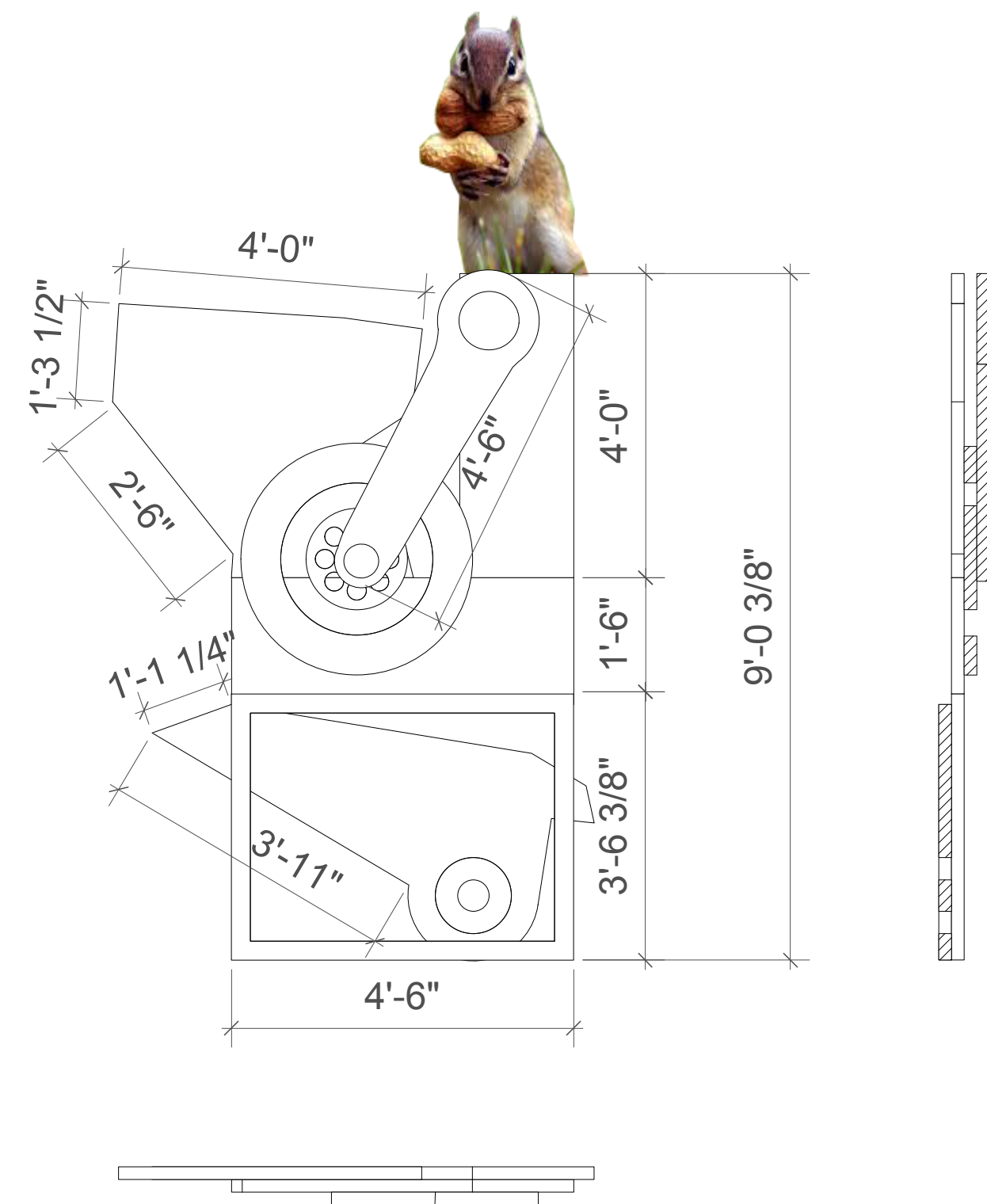
Chocolate Smelting Room  
GP and Elevation



Chocovision Room  
GP, Elevation, Section



Inventing Room  
GP, Elevation, Section



Nut Room  
GP, Elevation, Section

**General Notes**

1. -All scenery must fit within existing professional show's scenery in rep. Please discuss with designer for placement on each individual set piece.

-Please repurpose Jeckyll and Hyde open flats for Inventing Room and Fizzy Lifting Room. If these could be one reversible unit that would be great.

-Can we try to make a single reversible unit to save space for the Chocolate Smelting Room and the Nut Room?

-Please use 1" PVC pipe for Inventing Room structure (we have it in stock).

-Nut Room- Layers of cutouts to give it some dimension, but not too much depth.

-Chocovision Room- Card board boxes sprayed silver with colored gel or painted plastic for the screens. Can we see if we can backlight the TVs so they look like they are turned on?

Production Title		Wonka Junior Children's Theatre Surflight Theatre	
Drawing Title		Factory Rooms Elevations	
Designer	Andy Nice	Director	Jessica O'Brien
Drawn By	Andy Nice	Scale	1/2" = 1'0"
Venue	Joseph P Hayes Theatre	Drawing No.	Sht-1
Date	6/29/2014		of
CAD File Name	Wonka		1